



CLYDE MARINE SERVICES LTD



PASSENGER VESSEL


250 Persons

CLYDE CLIPPER

GENERAL

DELIVERY DATE
BASIC FUNCTIONS
CLASSIFICATION

2010
Passenger Vessel
EU Class C Passenger Certificate for up
to 250 persons
MCA Workboat Category 2

Bureau Veritas : I  HULL • MACH
Special service / Passenger Carrier
Coastal area

DIMENSIONS

LENGTH O.A. 27.0 m
BEAM O.A. 11.20 m
DEPTH 3.90 m
DRAUGHT AFT 2.20 m
DISPLACEMENT 170 Te.
GRT 125

TANK CAPACITIES

FUEL OIL 15241 litres (12.80 Te)
FRESH WATER 4446 litres (4.4 Te)

PERFORMANCES

SPEED 12.7 knots

PROPULSION SYSTEM

MAIN ENGINES 2 X Doosan
TOTAL POWER 806 KW (1080 bhp)
PROPELLERS 2 X fixed pitch propellers

ACCOMMODATION

The vessel is certified to transport 250 persons and is equipped with a galley and toilet facilities to DDA standard

NAUTICAL AND COMMUNICATION EQUIPMENT

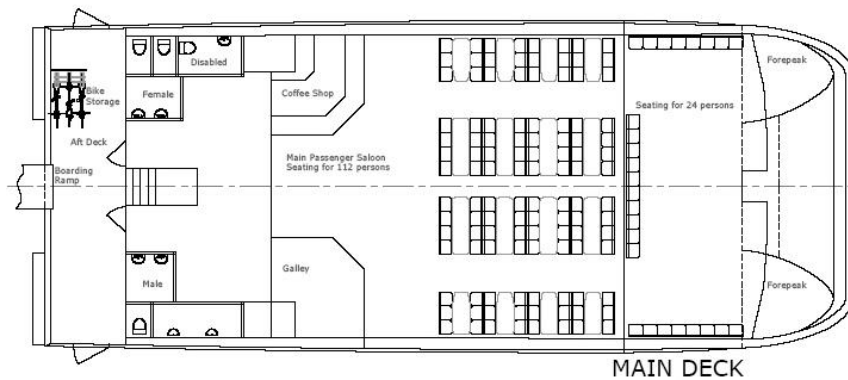
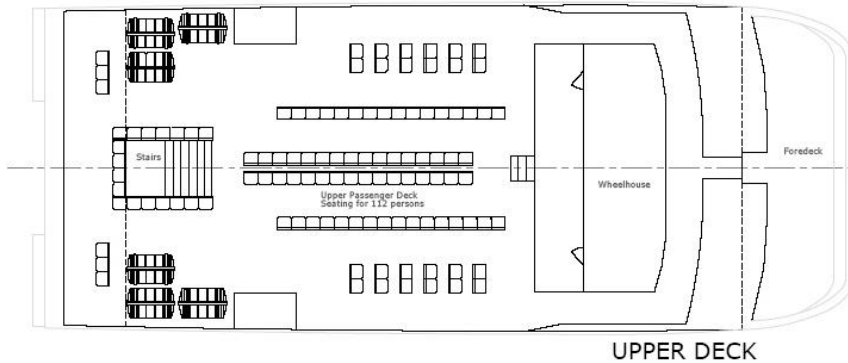
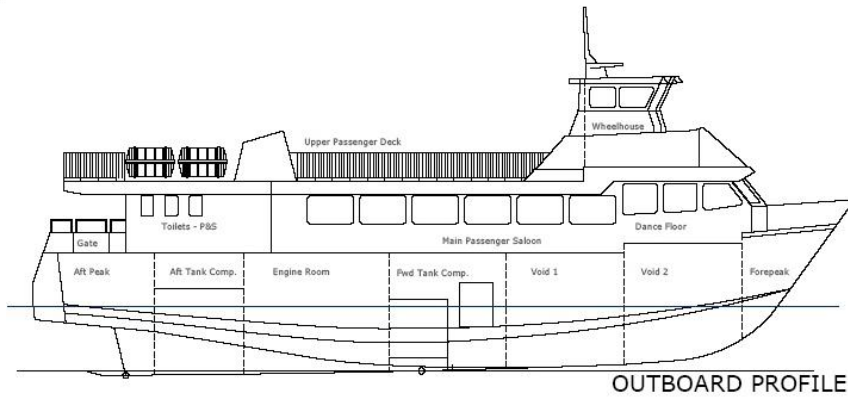
RADAR SYSTEM	JRC-5104
COMPASS	Lilley & Gillie
VHF	Icom IC-M411 (DSC) Sailor RT2048
	3 x Icom IC-M31 handhelds
CHART PLOTTER	Standard Horizon - GPS Chart CP300
SEARCHLIGHT	Seematz WH80
GPS equipped	JRC J-NAV 500
AIS equipped	Simrad A150
Horn	Ibuki Kogyo Co Ltd - ES300

GENERATOR

2 x Beta Marine 34kw



CLYDE MARINE SERVICES LTD



CONTACT DETAILS

CLYDE MARINE SERVICES LTD

Victoria Harbour,
GREENOCK,
PA15 1HW
SCOTLAND

Tel: 01475 721281

Fax: 01475 888023

Email: hamish.munro@clyde-marine.co.uk

www.clyde-marine.co.uk